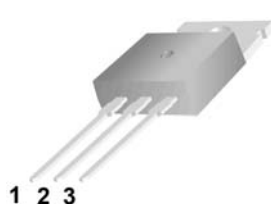
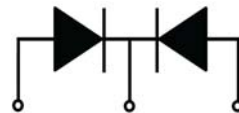



<p><b>MUR3010CT – MUR3060CT</b></p> <p><b>Features:</b></p> <ul style="list-style-type: none"> <li><input type="checkbox"/> High surge capacity</li> <li><input type="checkbox"/> Low Forward Voltage Drop.</li> <li><input type="checkbox"/> High Current Capability.</li> <li><input type="checkbox"/> Super Fast Switching Speed For High Efficiency</li> </ul>	<p><b>TO-220</b></p>   <p>1. Anode 2. Cathode 3. Anode</p> 
--	--

**Absolute Maximum Ratings** (Ta=25°C unless otherwise noted)

Parameter	Symbol	MUR 3010 CT	MUR 3015 CT	MUR 3020 CT	MUR 3040 CT	MUR 3060 CT	Unit
Peak Repetitive Reverse Voltage	$V_{RRM}$	100	150	200	400	600	V
Working Peak Reverse Voltage	$V_{RWM}$	70	105	140	240	420	V
DC Blocking Voltage	$V_{R(DC)}$	100	150	200	400	600	V
Average Rectified Forward Current	$I_{F(AV)}$			15			A
Per Leg				30			
Peak Rectified Forward Current (Rated $V_R$ , Square Wave, 20 kHz)	$I_{FM}$			30			A
Nonrepetitive Peak Surge Current (Surge applied at rated load conditions half wave, single phase, 60 Hz)	$I_{FSM}$			240			A
Operating Junction Temperature and Storage Temperature	$T_J, T_{stg}$			-55 to +150			°C
Maximum Thermal Resistance, Junction-to-Case(Per Leg)	$R_{\theta JC}$			3.0			°C/W
							2.0

**ELECTRICAL CHARACTERISTICS** (Per Diode Leg)

Parameter	Symbol	MUR 3010 CT	MUR 3015 CT	MUR 3020 CT	MUR 3040 CT	MUR 3060 CT	Unit
Forward Voltage (Note 1)( $I_F = 15 A, T_C = 25^\circ C$ ) ( $I_F = 15 A, T_C = 125^\circ C$ )	$V_F$			0.975 0.895	1.35 1.20	1.70 1.50	V
Maximum Instantaneous Reverse Current (Note 1) (Rated DC Voltage, $T_C = 25^\circ C$ ) (Rated DC Voltage, $T_C = 125^\circ C$ )	$I_R$			5 250	10 500	$\mu A$	
Maximum Reverse Recovery Time ( $I_F = 0.5 A, I_R = 1.0 A, I_{REC} = 0.25 A$ )	$T_{RR}$			35			ns

Note 1.Pulse Test: Pulse Width = 300  $\mu s$ , Duty Cycle  $\leq 2.0\%$

**Typical Characteristics**

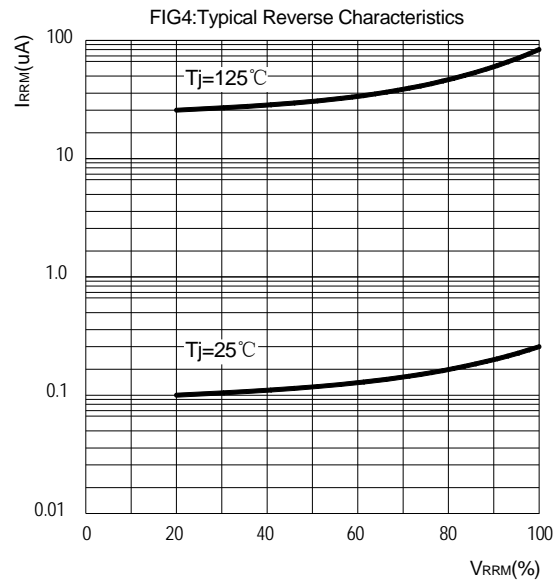
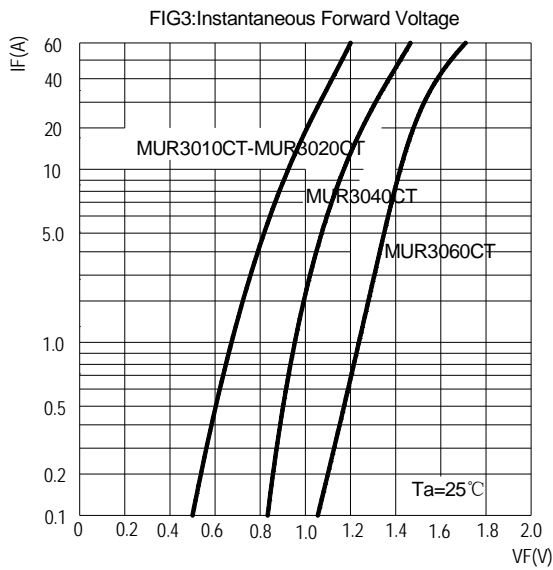
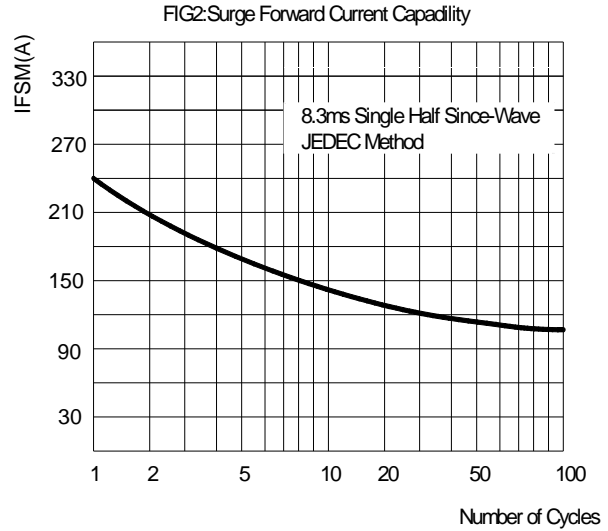
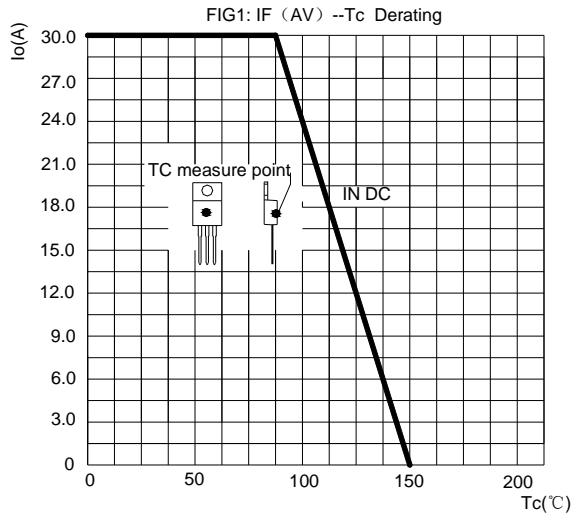
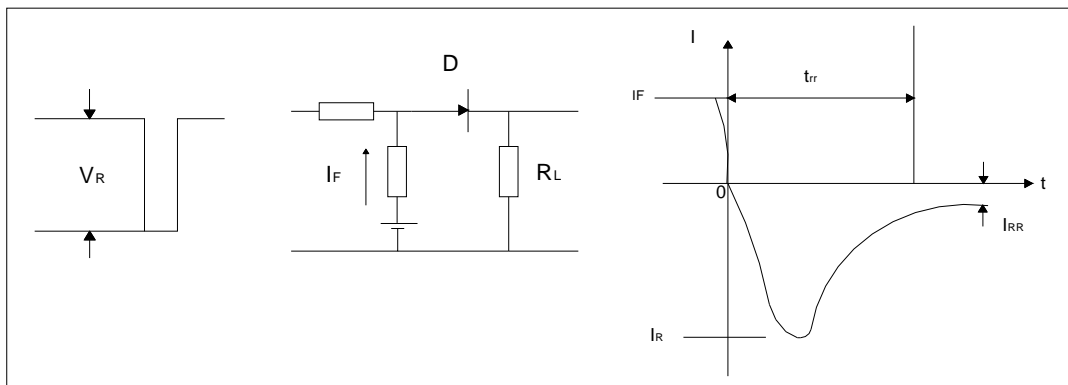


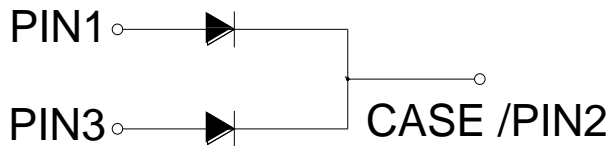
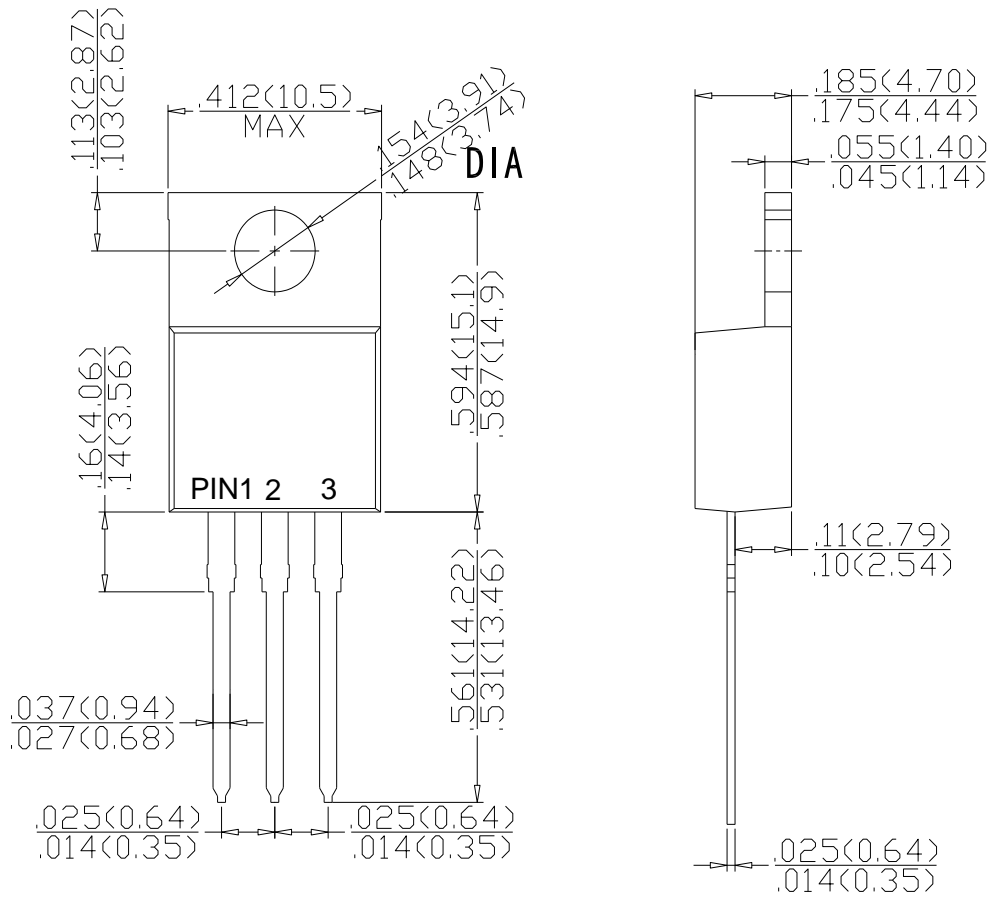
FIG.5: Diagram of circuit and Testing wave form of reverse recovery time



**Package Dimension**

TO-220

Unit: mm



Dimensions in inches and (millimeters)